

EDEN MIDCALF
— SALES & LETTINGS —

£298,500
Comber Grove
Kinver, DY7 6EY

PROPERTY SUMMARY

A large two bedroom first floor apartment enjoying delightful panoramic views over beautiful communal gardens and Kinver village. Located within the highly sought after Kinver Mount development, which is within easy reach of village amenities, the property offers a generous, attractively presented layout that is "ready to move into". The accommodation includes a large lounge/dining room with a Juliet balcony and two double bedrooms, the master of which enjoys an en-suite shower room. The building benefits from a lift to the upper floors and is set within maintained grounds, including communal gardens and allocated off-road parking for one car within a gated residents carpark.

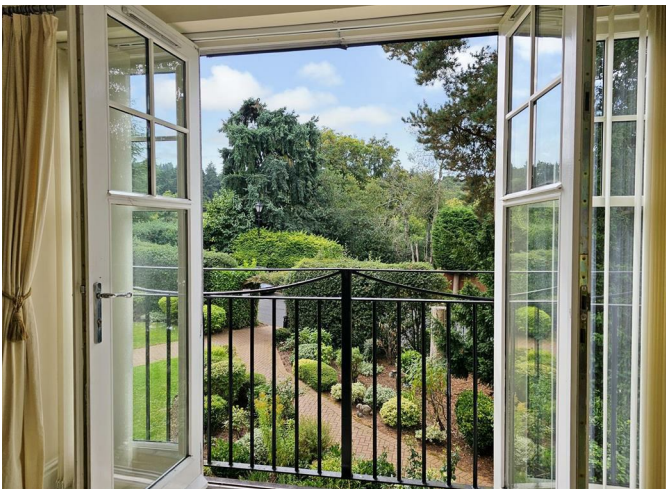
2



2



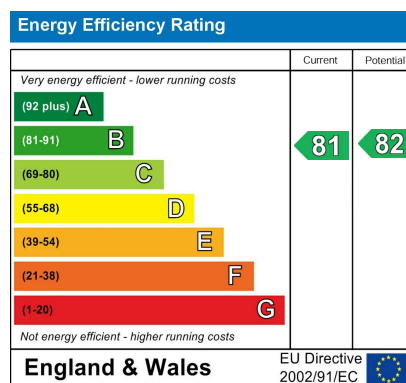
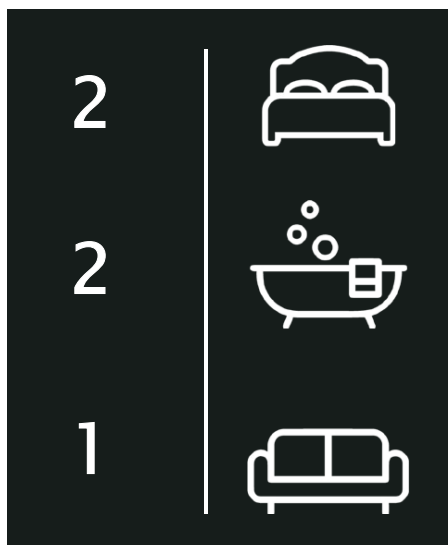
1











Agents Note: Whilst every care has been taken to prepare these particulars, they are for guidance purposes only. All measurements are approximate and are for general guidance purposes only and whilst every care has been taken to ensure their accuracy, they should not be relied upon and potential buyers/tenants are advised to recheck the measurements

EDEN MIDCALF
SALES & LETTINGS

28 High Street
Kinver
DY7 6HF

01384 878000

<https://www.edenmidcalf.co.uk/cor-us/>